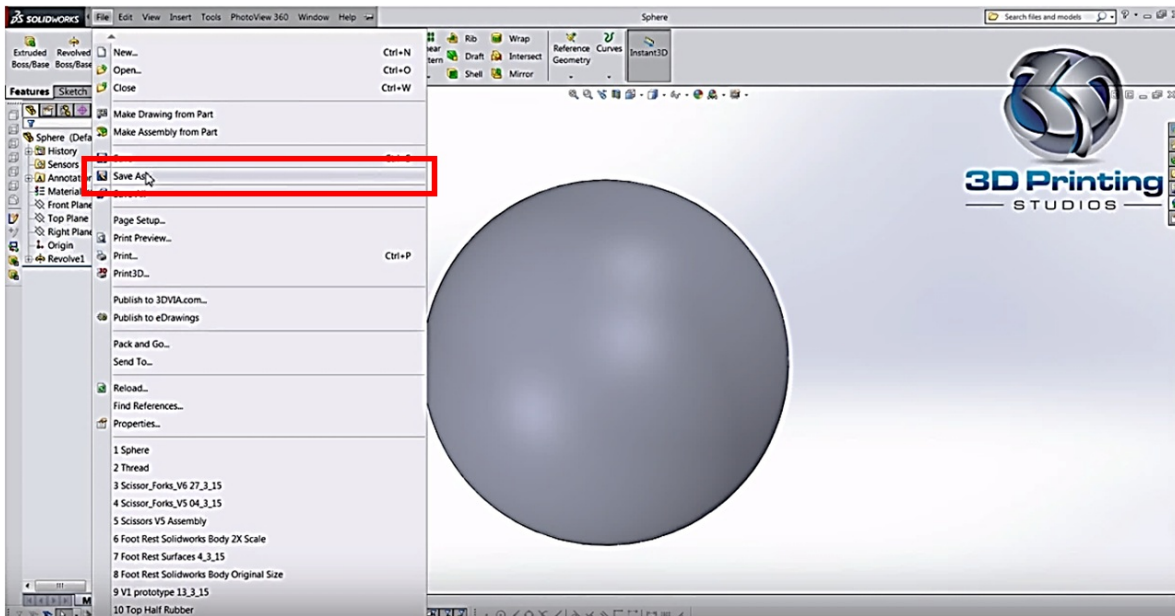


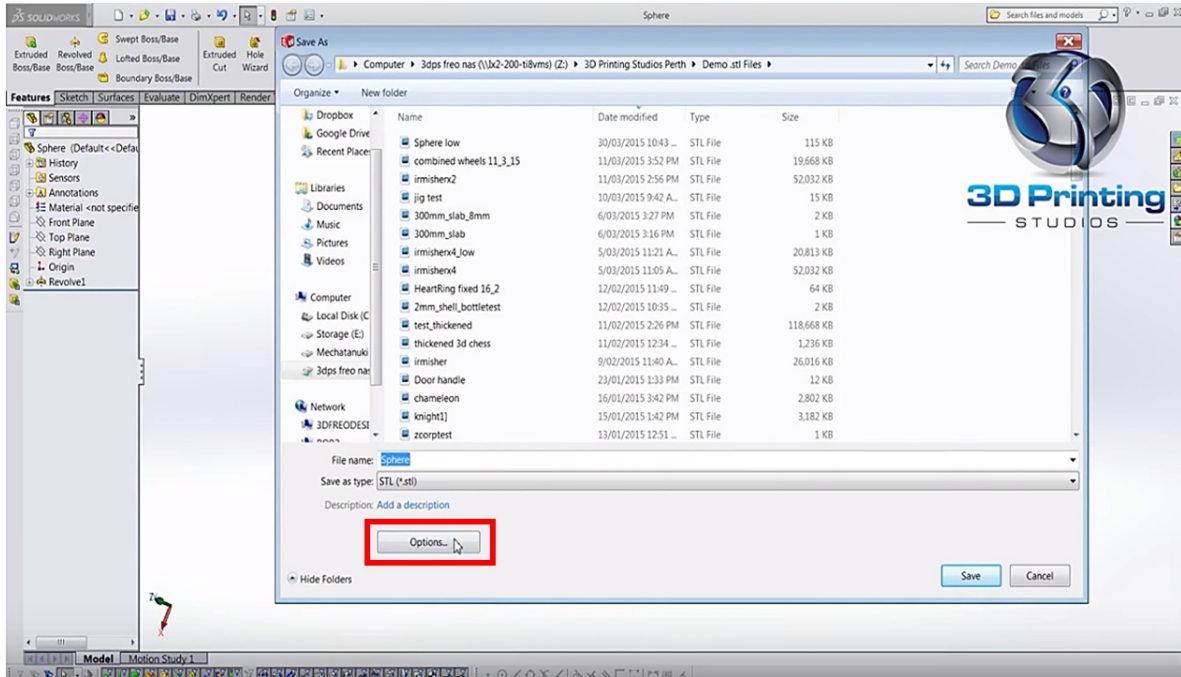
How to import Solidworks files into Cortex

Solidworks

1. Go to **File > Save As** in the dialog box

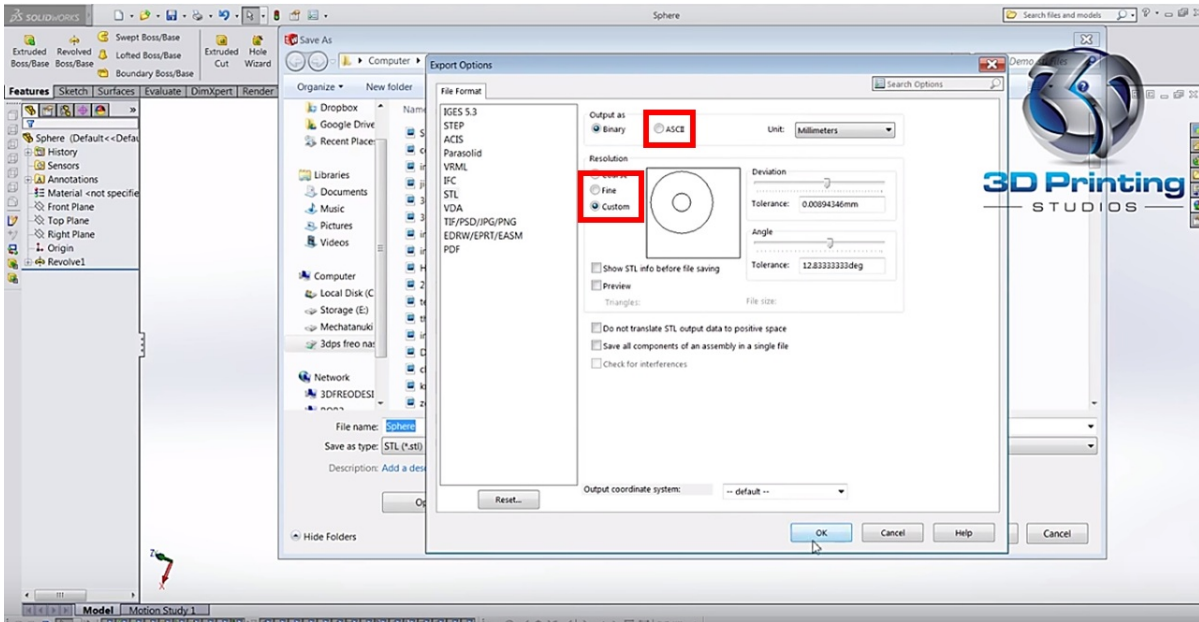


2. Click on **Options** button underneath (where you enter your filename)



3. You will see a window where you can choose between different file type. Choose. ASCII and Fine for a better resolution, or Custom for the resolution that you want.

4. Press the Ok button and Save. Your file will be in ACSII



5. Compress your new file ACSII (This is your CAD)

Cortex

1. Click on the button **Import Cad...**



2. Find your cad

3. A list of the beam contain in the cad will appear inside the box labeled **Assembly**

*****Be aware that importing a cad clean the Assemblies box, so be sure to be done with the assembly that are there before bringing any new cad.*****